

COMPANY UP&DOWN DOWNLIGHT IN-GROUND BRICKLIGHT FLOODLIGHT BOLLARD BULKHEAD GARDEN URBAN CLASSIC URBAN MODERN POST LAMPS REFERENCES

BEPPE 400 E27

LARGE SIZE



Modern luminaries made of shockproof resin material, UV-rays stabilized, rust and corrosion-free. Suitable for post top installation. Provided with high temperature resistant ceiling suitable for horizontal bulb fixation and with aluminum reflector to optimize the light distribution. Designed according to the international regulations against light pollution (standard UNI 10819). Insulation class II, Protection rating IP65.

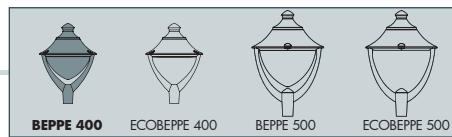
Diffusore moderno realizzato in resina antiurto, stabilizzato ai raggi UV, inattaccabile da ruggine e corrosione. Idoneo per il montaggio a palo. Fornito con soffitto ad alta resistenza al calore idoneo per il fissaggio orizzontale della lampadina e provvisto di parabola riflettente in alluminio per direzionare il flusso luminoso. Progettato in ottemperanza alle norme internazionali contro l'inquinamento luminoso (standard UNI 10819). Classe di isolamento II, grado di protezione IP65.



P50.000.E27

RECYCLABLE	ANTISHOCK	TEMPERATURE	POST	





BEPPE 400 E27 - E40 - COMPONENTS

IP65



ROOF made of shockproof resin material, UV-rays stabilized, rust and corrosion-free.

TETTO realizzato in resina antiurto, stabilizzata ai raggi UV, inattaccabile da ruggine e corrosione.

High temperature resistant **CEILING** made of white polycarbonate (PC), UV-rays stabilized, suitable for ballast fixation on its upper side and provided with E27 or E40 lampholder on its lower side. Bulb in horizontal position.

SOFFITTO realizzato in policarbonato bianco (PC) ad alta resistenza al calore, stabilizzato ai raggi UV, nella cui parte superiore vengono fissati i reattori. Fornito completo di portalamпада E27 o E40 atto a sostenere la lampadina in posizione orizzontale.

Parabolic **REFLECTOR** made of anodized aluminium, designed to optimize the light distribution and to limit the skyward dispersion of the luminous flux.

PARABOLA riflettente realizzata in alluminio anodizzato, progettata per ottimizzare la distribuzione del flusso luminoso e limitarne la dispersione verso il cielo.

DIFFUSER made of UV-rays stabilized polymethylmethacrylate (PMMA), one piece only, available in clear or opal colour.

DIFFUSORE realizzato in polimetilmetacrilato (PMMA) stabilizzato ai raggi UV, un pezzo unico, disponibile in colore trasparente o opale.

Decorative connection **RING** to be fixed on the luminaries diffuser.

ANELLO decorativo di connessione da fissare sul diffusore dell'apparecchio.



Dimensions and weight

Height: 420 mm
Diameter: 480 mm
Weight: 3,7 Kg
Junction to support: Ø 60 mm
Area expose to wind pressure: CxS = m² 0,1449

Moulded colours:

 Black  White  Grey

Diffuser PMMA:

 Clear  Opal

E27-E40

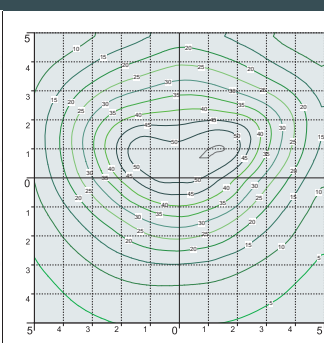
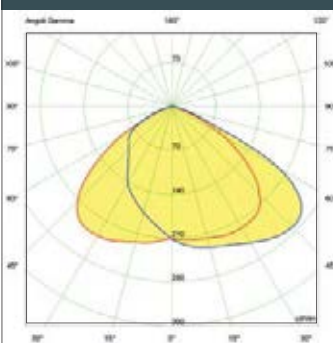
*ADD. SUFFIX



Luminaries supplied with E27 or E40 lampholder.

suitable lamps: CFL-LED SON-HQI max 100W	E27 Lampholder only	.E27
	E40 Lampholder only	.E40

PHOTOMETRIC DATA SAMPLE



BEPPE 400 clear HQI 70W.

POST height 3,5mt
10x10mt area: average 20 lux

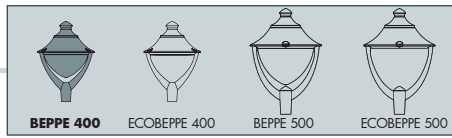
The photometric data for all the versions are available upon request or on our website.

COMPANY
UP&DOWN
DOWNLIGHT
IN-GROUND
BRICKLIGHT
FLOODLIGHT
BOLLARD
BULKHEAD
GARDEN
URBAN CLASSIC
URBAN MODERN
POST
LAMPS
REFERENCES

BEPPE 400

LARGE SIZE





NEW LOT/BEPPE400
P50.115

Pcs 1
Kg 5,3
mc 0,119

BEPPE400
P50.000

Pcs 1
Kg 5
mc 0,113

EKTOR 2500/BEPPE400
P50.361.000

Pcs 1
Kg 29,3
mc 0,256

EKTOR 3000/ BEPPE400	AKILLE 3000/ BEPPE400
P50.364.000	P50.414.000
Pcs 1 Kg 32,7 mc 0,282	

EKTOR 3500/ BEPPE400	AKILLE 3500/ BEPPE400
P50.367.000	P50.417.000
Pcs 1 Kg 36,1 mc 0,309	

EKTOR 4000/ BEPPE400	AKILLE 4000/ BEPPE400
P50.371.000	P50.421.000
Pcs 1 Kg 39,5 mc 0,335	