

BEPPE 500 E27

GRAND SIZE



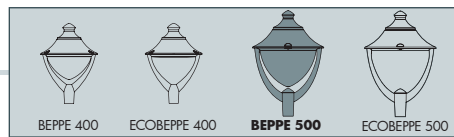
Modern luminaries made of shockproof resin material, UV-rays stabilized, rust and corrosion-free. Suitable for post top or wall installation. Provided with high temperature resistant ceiling suitable for horizontal bulb fixation and with aluminum reflector to optimize the light distribution. Designed according to the international regulations against light pollution (standard UNI 10819). Insulation class II, Protection rating IP65.

Diffusore moderno realizzato in resina antiurto, stabilizzato ai raggi UV, inattaccabile da ruggine e corrosione. Idoneo per il montaggio a palo o a parete. Fornito con soffitto ad alta resistenza al calore idoneo per il fissaggio orizzontale della lampadina e provvisto di parabola riflettente in alluminio per dirigere il flusso luminoso. Progettato in ottemperanza alle norme internazionali contro l'inquinamento luminoso (standard UNI 10819). Classe di isolamento II, grado di protezione IP65.



P60.000.E27





BEPPE 500 E27 - E40 - COMPONENTS

IP65



ROOF complete with decorative pinnacle made of shockproof resin material, UV-rays stabilized, rust and corrosion-free.

TETTO completo di pinnacolo decorativo realizzato in resina antiurto, stabilizzata ai raggi UV, inattaccabile da ruggine e corrosione.

High temperature resistant **CEILING** made of white polycarbonate (PC), UV-rays stabilized, suitable for ballast fixation on its upper side and provided with E27 or E40 lampholder on its lower side. Bulb in horizontal position.

SOFFITTO realizzato in polycarbonato bianco (PC) ad alta resistenza al calore, stabilizzato ai raggi UV, nella cui parte superiore vengono fissati i reattori. Fornito completo di portalampada E27 o E40 atto a sostenere la lampadina in posizione orizzontale.

Parabolic **REFLECTOR** made of anodized aluminium, designed to optimize the light distribution and to limit the skyward dispersion of the luminous flux.

PARABOLA riflettente realizzata in alluminio anodizzato, progettata per ottimizzare la distribuzione del flusso luminoso e limitarne la dispersione verso il cielo.

DIFFUSER made of UV-rays stabilized polymethylmethacrylate (PMMA), one piece only, available in clear or opal colour.

DIFFUSORE realizzato in polimetilmetacrilato (PMMA) stabilizzato ai raggi UV, un pezzo unico, disponibile in colore trasparente o opale.

CAGE for post top installation complete with connection ring (one piece only) to be fixed on the luminaries diffuser.

BIPODE in un unico pezzo completo di anello di connessione da fissare sul diffusore dell'apparecchio.



Dimensions and weight

Height: 850 mm
Diameter: 600 mm
Weight: 7,5 Kg
Junction to support: diameter 60 mm
Area expose to wind pressure: CxS = m² 0,246

Moulded colours:

Black White Grey

Diffuser PMMA:

Clear Opal

E27-E40

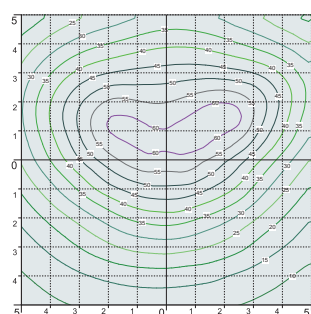
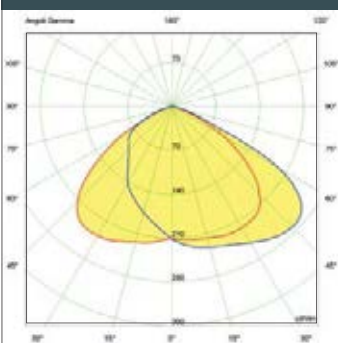
*ADD. SUFFIX



Luminaries supplied with E27 or E40 lampholder.

suitable lamps: CFL-LED SON-HQI max 150W	E27 Lampholder only	.E27
	E40 Lampholder only	.E40

PHOTOMETRIC DATA SAMPLE



BEPPE 500 clear HQI 150W.

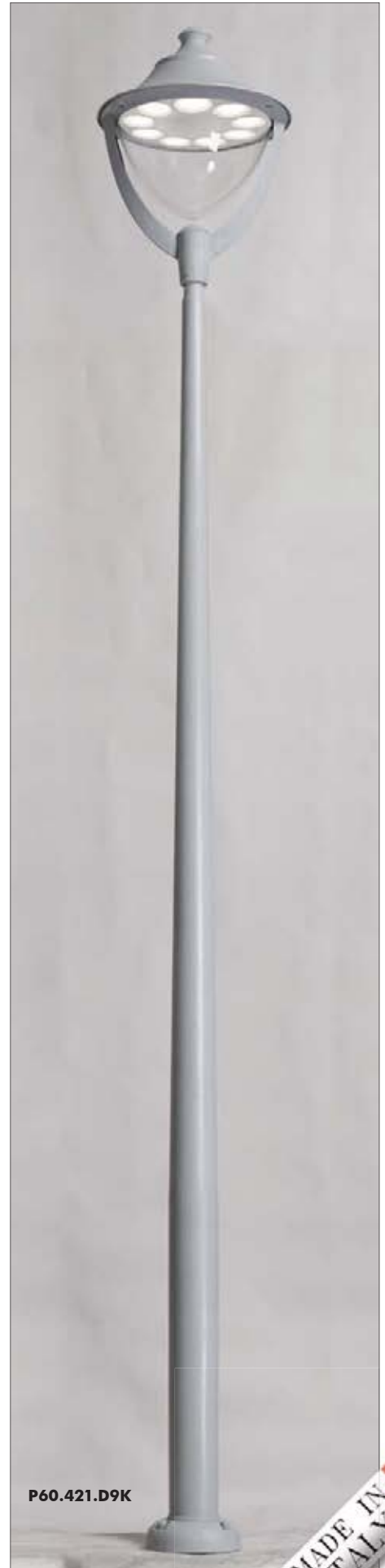
POST height 5mt
10x10mt area: average 31 lux

The photometric data for all the versions are available upon request or on our website.

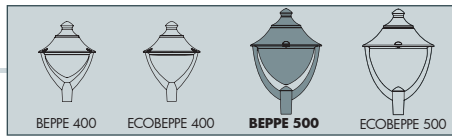
* ADD THESE SUFFIXES TO THE REFERENCES MENTIONED IN THE CATALOGUE

BEPPE 500

GRAND SIZE



MADE IN ITALY



EKTOR 6000/BEPPE500
P60.384.000

600

Pcs 1
Kg 84,1
mc 1,41

6735

400

EKTOR 5000/BEPPE500 P60.377.000	AKILLE 5000/BEPPE500 P60.427.000
Pcs 1 Kg 54,6 mc 0,48	
EKTOR 4500/BEPPE500 P60.374.000	AKILLE 4500/BEPPE500 P60.424.000
Pcs 1 Kg 49,1 mc 0,46	

600

5735
5235

265

600

600

EKTOR5000

AKILLE4500

EKTOR 4000/BEPPE500 P60.371.000	AKILLE 4000/BEPPE500 P60.421.000
Pcs 1 Kg 43,6 mc 0,43	
EKTOR 3500/BEPPE500 P60.367.000	AKILLE 3500/BEPPE500 P60.417.000
Pcs 1 Kg 40,2 mc 0,40	
EKTOR 3000/BEPPE500 P60.364.000	AKILLE 3000/BEPPE500 P60.414.000
Pcs 1 Kg 36,8 mc 0,38	

600

4735
4235
3735

265

600

600

EKTOR4000

AKILLE3500

BEPPE500
P60.000

600

Pcs 1
Kg 9,1
mc 0,20

850

Ø 60

PILAR/BEPPE500
P60.253

920

Pcs 1
Kg 11,1
mc 0,24

1250

NEW LOT/BEPPE500
P60.115

600

Pcs 1
Kg 9,4
mc 0,21

960