

UMBERTA EMERGENCY

LARGE ROUND



LED MAINTAINED EMERGENCY bulkhead lamp with no visible screws. Made of shockproof resin material, UV-rays stabilized, rust and corrosion-free. Suitable for wall and ceiling installation. In case of blackout, the bulkhead switches from Normal mode to Emergency mode and keeps on working. Minimum 3 hours battery operating time. Insulation class II, Protection rating IP66.



Plafoniera a LED, RETE PIU' EMERGENZA, senza viti a vista. Realizzata in resina antiurto stabilizzata ai raggi UV, inattaccabile da ruggine e corrosione. Idonea per il montaggio a parete e a soffitto. In caso di interruzione di corrente, la plafoniera passa dalla modalità "Normale" alla modalità "Emergenza" e rimane accesa. Autonomia minima 3 ore. Classe di isolamento II, grado di protezione IP66.

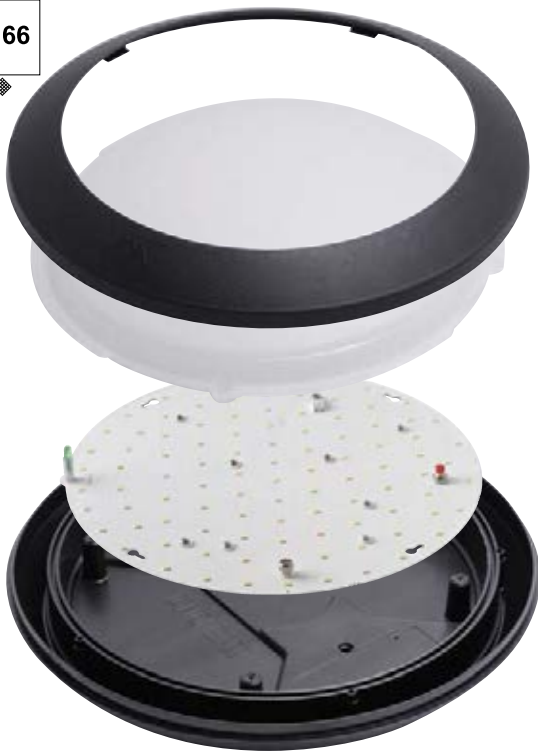


1B3.000.EM1



UMBERTA EMERGENCY - COMPONENTS

IP66



LED Printed Circuit Board provided with a fully-prewired **Emergency Kit**. In case of blackout the bulkhead automatically switches from Normal mode (15W - 2000 Lm) to Emergency mode (2,4W - 250 Lm) and keeps on working for the next 3 hours.

Circuito stampato a LED fornito completo di kit d'emergenza pre-cablato. In caso di interruzione di corrente, la plafoniera passa dalla modalità "Normale" (15W - 2000 Lm) alla modalità "Emergenza" (2,4W - 250lm) e rimane accesa per 3 ore.



UMBERTA



Dimensions and weight

Diameter: \varnothing 350 mm
Depth: 94 mm
Weight: 2,3 Kg

Moulded Colours:

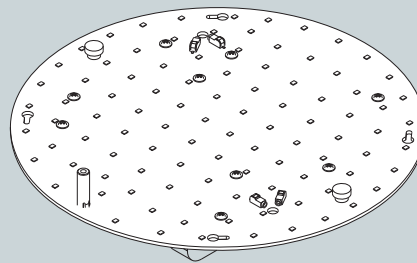
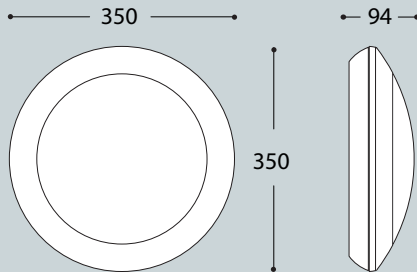
Black Grey White

Diffuser PMMA:

Opal

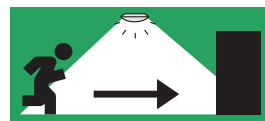
UMBERTA MAINTAINED EMERGENCY

1B3.000.EM1



Pcs 12
Kg 25
mc 0,198

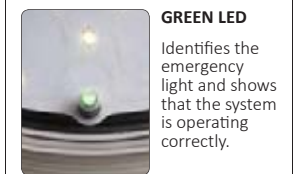
PRODUCT TYPE	Wall and Ceiling bulkhead with Emergency kit
OPERATING VOLTAGE	220~240 vAC
LUMINOUS FLUX & POWER	2000 lumen (Normal mode), 15W 250 lumen (Emergency mode), 2.4W
LED TYPE	Edison SMD 2835, 4000 K
CRI	>80Ra
PF (POWER FACTOR)	>0.95
BEAM ANGLE	120°
OPERATING TEMPERATURE	0~50°C
BATTERY	Ni-MH, BK370Ah3.6V, Panasonic (3.5Ah, 3.6V)
BATTERY OPERATING TIME	min 3 hours (250 lumen)
BATTERY CHARGING TIME	24 hours
Drivers Standards	EN 61347-1, EN 61347-2-7, EN 61347-2-13, EN 62384, EN 60598-2-22 EN 55015, EN61547, EN 61000-3-2, EN 61000-3-3
Battery Standards	EN 5501-1, EN 61000, EN 55014-2



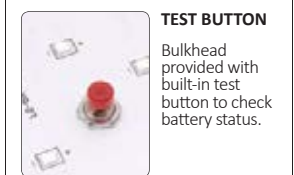
Emergency details



SAVE 90%



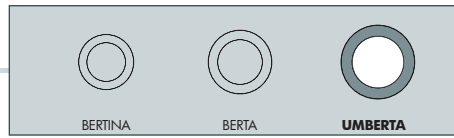
GREEN LED
Identifies the emergency light and shows that the system is operating correctly.



TEST BUTTON
Bulkhead provided with built-in test button to check battery status.



MAINTAINED EMERGENCY
Normal mode: 15W - 2000Lm
Emergency mode: 2.4W - 250 Lm



UMBERTA GX53	
7W	1B3.000.A1K
11W	1B3.000.B1K
18W	1B3.000.E1K

CCT SETTABLE GX53 LED LAMP INCLUDED
2700K/4000K/6500K

Pcs 12
Kg 22
mc 0,198

UMBERTA E27	
1xE27 lampholder	1B3.000.E27
2xE27 lampholder	1B3.000.E28
1xE27 with sensor	1B3.000.ES7
2xE27 with sensor	1B3.000.ES8

Pcs 12
Kg 19,6
mc 0,198